

# CAN YOU PRINT 0~75CM HEIGHT MATERIALS?

**YES WE CAN!**

- Ricoh gen5 print heads ensure fast printing
- 2 in 1 multi-function platforms
- Print size: left side 800\*1000mm + right side 600\*800mm
- Print height: left side 0~100mm + right side 0~750mm
- Right side equipped with 65cm height adjustable lifting platform

**Model No.: RH1610GM**



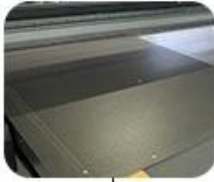
## COLOR SCHEMES



### Ricoh Gen5 Print Heads Arrangement (3~6pcs Heads Options) RH1610/ RH1610GM/ RH2513: Single Head Double Color

Print Heads Color	Print Heads Quantity	Color Arrangement	Print Area
2color+1white	3pcs	K C M Y W W	160*100cm,250*130cm
3color+1white	4pcs	K C M Y LC LM W W	160*100cm,250*130cm
2color+1white+1varnish	4pcs	K C M Y W W V V	160*100cm,250*130cm
3color+1white+1varnish	5pcs	K C M Y LC LM W W V V	160*100cm,250*130cm
2color+2white	4pcs	K C M Y W W W W	160*100cm,250*130cm
3color+2white	5pcs	K C M Y LC LM W W W W	160*100cm,250*130cm
2color+2white+1varnish	5pcs	K C M Y W W W W V V	160*100cm,250*130cm
3color+2white+1varnish	6pcs	K C M Y LC LM W W W W V V	160*100cm,250*130cm

# RH1610GM



## Left platform:

Equipped with air suction device  
0-100mm printing height  
Max. print volume: W800\*L1000\*H100mm



## Right platform:

Equipped with 0-650mm height adjustable lifting system  
Max. print volume: W600\*L800\*H750mm



- Ricoh gen5 print heads ensure fast printing
- In total 1000\*1600mm size platform



## Well Configured:

Printer is equipped with electrostatic air gun, infrared radiation and anti-collision device on the carriage.

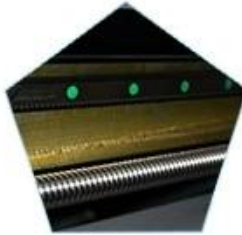
# FEATURES



Platform locating  
function



Suction platform  
segment control



Double  
guide, double screw



X,Y axis uses three  
groups of servo



Automatic height  
detector, ink carriage  
anti-collision



Ink carriage with  
Anti-static device



high sensitive  
printer  
anti-collision, safe  
operation



The color  
separation cleaning  
device has high  
washout rate and  
better ink saving



Environmental  
friendly LED-UV  
curing



Support CMYK,  
White and Varnish  
synchronization  
output

# ADVANTAGES

## Machine design advantages:



- Can print 0~75CM height materials
- Left platform equipped with air suction device
- Right platform equipped with 0~650mm height adjustable lifting system
- Durable parts for industrial production.
- Emergency stop switches make it easy to stop operation from any corner of the printer.
- The inside of Printer head has heating function, printing won't be affected by temperature, and no need water cooling system to keep constant temperature.
- Jet force of Ricoh GEN5 printer head is better than Toshiba, there will be no printing affect even space between 3mm.
- Printer is equipped with electrostatic air gun, infrared radiation and anti-collision device on the carriage.

## Machine structure features:

- APEX brand new 2 in 1 multi-function platforms UV printer
- Print Size: Left Side 800\*1000mm + Right Side 600\*800mm
- Print Height: Left Side 0~100mm + Right Side 0~750mm
- Zero positioning assistant system.
- High-precision, high-thickness integrated platform.
- Equipped with vacuum table with Strong material adsorption, easy to feed materials.
- Automatic height measurement system.
- High-sensitivity collision avoidance system.
- Printer head with inner heating temperature controller.
- white ink stirring system.
- Print the color ink and white ink at the same time.
- Y axis adopts imported wire rod and guide rail.
- XY axis adopts high quality servo motor.
- Support the color ink, white ink and varnish oil synchronization output.



## Outstanding printing speed and quality:



- Industrial fast printing speed, only 15'06" for full size printing 160\*100cm.
- UV curing ink can print in varies materials directly, it can get perfect high performance in color and productivity.
- Ricoh GEN5 printhead has 5–8 gray scale piezoelectric nozzles, variable ink drop printing, minimum 7pl photo level accuracy, can clearly print 2pt fonts, the maximum resolution up to 1440\*1200dpi. Head carriage positioning using a fixed linear grating to ensure high–precision print positioning.
- It has a high degree of printing characteristics, 6 pass bidirectional 13 square meters per hour.
- Save ink up to 30%–50%.
- This printing speed is faster than normal Epson and Toshiba printhead printer, life–time is much longer as well.
- You can set different printing pass to meet your printing result.
- Auto Height Sensor: Smartly Detect the Distance between Media and Printer Head.
- UV Light Brightness Switch: Adjustable UV light Brightness to Fit Curing Needs.
- Auto Positive Pressure Cleaning System.

## Various of UV Printing Materials:

- suitable for printing on glass, acrylic, wood, ceramic tile, metal plate, PVC plate, plastic and other materials.



# APPLICATION



# SPECIFICATION

Model No.	RH1610GM
Print Size	Left Side 800*1000mm/ Right Side 600*800mm (1600*1000mm in Total)
Max. Print Height	Left side H100mm Right side H100mm+H650mm Height Adjustable=H750mm
Multi-function Print Platform	2 IN 1 Multi-function Platform Left Platform Equipped with Air Suction Device Right Platform Equipped with 650mm Height Adjustable Lifting System
Print Head	Ricoh Gen5
Print Head Quantity	3~6
Print Color	KCMYLcLmWWV
Print Resolution	720*2400dpi 16pass
Curing System	2 * LED UV
Print Format	TIFF, PSD, JPG, etc
Cleaning System	Auto Positive Pressure Printing
Interface	USB2.0
Operation System	Windows 7 / Windows 10
Power Requirement	50/60HZ 220V(±10%) <20A
Temperature/Humidity	68-82°F HR40-60%
RIP Software	PhotoPrint
Printer Weight	665kg
Printer Size	313*181*143cm
Packing Weight	1450kg
Packing Size	377*199*176cm

# GALLERY



Microtec/Apex's main objective is to support all our customers, who can manage their APEX UV printers activities without interruption. So Apex offers FREE SPARE PARTS with a quantitative order and the following guarantee:

- \* Free lifetime technical support online for all apex printers.
- \* One year warranty for the whole machine excluding printer heads
- \* Three months warranty on the consumable parts like dampers, cap tops, etc.
- \* Five professional English engineer available to provide onsite service if customer needed(customers pay onsite service charge, bear tickets and accommodation)





# PACKAGING & SHIPPING



Before shipment, the machine is cleaned fully, daubed by anti-rust oil carefully, covered by plastic bag, wrapped by the stretch film, and at last firmed into the wooden case.

Packaging: packed with foam perfectly, wrapped by stretch film, and put into strong carton box.

## Scan for more details



### *Description:*

#### **Machine design advantages:**

- Can print 0~75CM height materials
- APEX brand new 2 in 1 multi-function platforms UV printer offers you completely new personalized UV printing experience
- Left platform equipped with air suction device 0-100mm printing height (Max. print volume: W800\*L1000\*H100mm)
- Right platform equipped with 0-650mm height adjustable lifting system (max. print volume: W600\*L800\*H750mm)
- Durable parts for industrial production.
- Emergency stop switches make it easy to stop operation from any corner of the printer.
- The inside of Printer head has heating function, printing won't be affected by temperature, and no need water cooling system to keep constant temperature.
- Jet force of Ricoh GEN5 printer head is better than Toshiba, there will be no printing affect even space between 3mm.

- Printer is equipped with electrostatic air gun, infrared radiation and anti-collision device on the carriage.

**Outstanding printing speed and quality:**

- Industrial fast printing speed, only 15'06" for full size printing 160\*100cm.
- UV curing ink can print in varies materials directly, it can get perfect high performance in color and productivity.

**Machine structure features:**

- Print Size: Left Side 800\*1000mm + Right Side 600\*800mm
- Print Height: Left Side 0~100mm + Right Side 0~750mm
- Right side equipped with 65cm height adjustable lifting platform
- Zero positioning assistant system.
- High-precision, high-thickness integrated platform.
- Equipped with vacuum table with Strong material adsorption, easy to feed materials.
- Automatic height measurement system.
- High-sensitivity collision avoidance system.
- Printer head with inner heating temperature controller.
- white ink stirring system.
- Print the color ink and white ink at the same time.
- Y axis adopts imported wire rod and guide rail.
- XY axis adopts high quality servo motor.
- Support the color ink, white ink and varnish oil synchronization output.

**Printing quality and speed:**

- Ricoh GEN5 printhead has 5-8 gray scale piezoelectric nozzles, variable ink drop printing, minimum 7pl photo level accuracy, can clearly print 2pt fonts, the maximum resolution up to 1440\*1200dpi. Head carriage positioning using a fixed linear grating to ensure high-precision print positioning.
- It has a high degree of printing characteristics, 6 pass bidirectional 13 square meters per hour.
- The maximum print height is 100mm, suitable for printing on glass, acrylic, wood, ceramic tile, metal plate, PVC plate, plastic and other materials.
- Save ink up to 30%-50%
- This printing speed is faster than normal Epson and Toshiba printhead printer, life-time is much longer as well.
- You can set different printing pass to meet your printing result.
- Auto Height Sensor: Smartly Detect the Distance between Media and Printer Head
- UV Light Brightness Switch: Adjustable UV light Brightness to Fit Curing Needs
- Auto Positive Pressure Cleaning System

**Specification:**

<b>Model No.</b>	RH1610GM
<b>Print Size</b>	Left Side 800*1000mm/ Right Side 600*800mm (1600*1000mm in Total)
<b>Max. Print Height</b>	Left side H100mm Right side H100mm+H650mm Height Adjustable = H750mm
<b>Multi-function Print Platform</b>	·2 IN 1 Multi-function Platform ·Left Platform Equipped with Air Suction Device ·Right Platform Equipped with 650mm Height Adjustable Lifting System
<b>Print Head</b>	Ricoh GEN5 (Nozzles 320X4), printer heads can be 3~6pcs.
<b>UV Curing System</b>	UV LED Water Cooling System
<b>Materials to Print</b>	metal, plastic, glass, wood, ceramics, acrylic, leather, pen, etc.
<b>Power Consumption</b>	3800W
<b>Power Requirement</b>	50/60HZ 220V (±10%) <20A
<b>Environment</b>	20 ~ 28C HR40-60%

<b>RIP Software</b>	Sai PhotoPrint DX Plus
<b>Software Language</b>	English/ Chinese/ German/ Italian/ Japanese/ Korean/ French/ Finnish/ Dutch/ Portuguese/ Spanish
<b>Operation System</b>	Windows 7/ Windows10
<b>Ink Type</b>	UV ink
<b>Ink Color</b>	KCMYWW / KCMYLcLmWW / KCMYLcLmWWWV
<b>Ink Supply System</b>	CISS Built Inside With Ink Bottle
<b>Interface</b>	USB2.0
<b>Machine Size</b>	313*181*143cm
<b>Machine Weight</b>	665kg
<b>Machine Gross Weight</b>	1450kg
<b>Packing Dimension</b>	377*199*176cm
<b>Packing</b>	Strong Wooden Package with Full Foam

## Display:









# PROFESSIONAL R&D TEAM





# OUR EXHIBITIONS



# CUSTOMER VISITING



