

## Description:

### Newest Large Format UV Printer RH1610/RH2513

#### Features

- With Ricoh GEN5 printer head
- Fast speed, high precision, bright color
- High-sensitivity collision avoidance system.
- Vacuum table with strong material adsorption
- Zero positioning assistant system
- Automatic height measurement system
- Printer head with inner heating temperature controller
- White ink stirring system



# RICOH SERIES UV PRINTER LARGE FORMAT

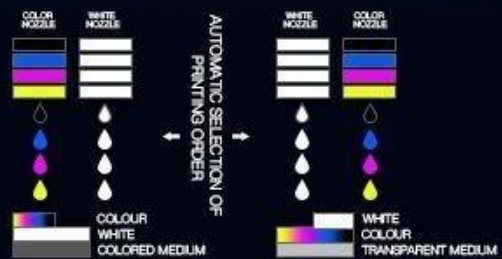
RICOH GEN5 HEAD • ANTI COLLISION • SAFE OPERATION • INDUSTRIAL FAST SPEED



Scan for more information



Layer1 varnish oil  
Layer2 color Ink  
Layer3 white ink  
Three layers can be printed at one time



## APPLICATION SCENE



Phone case



Outdoor advertising



Subway advertising



Car body sticker



Ground advertising

# COLOR SCHEMES



## Ricoh Gen5 Print Heads Arrangement (3~6pcs Heads Options) RH1610/ RH1610GM/ RH2513: Single Head Double Color

Print Heads Color	Print Heads Quantity	Color Arrangement	Print Area
2color+1white	3pcs	<b>K C M Y</b> W W	160*100cm,250*130cm
3color+1white	4pcs	<b>K C M Y LC LM</b> W W	160*100cm,250*130cm
2color+1white+1varnish	4pcs	<b>K C M Y</b> W W <b>V V</b>	160*100cm,250*130cm
3color+1white+1varnish	5pcs	<b>K C M Y LC LM</b> W W <b>V V</b>	160*100cm,250*130cm
2color+2white	4pcs	<b>K C M Y</b> W W W W	160*100cm,250*130cm
3color+2white	5pcs	<b>K C M Y LC LM</b> W W W W	160*100cm,250*130cm
2color+2white+1varnish	5pcs	<b>K C M Y</b> W W W W <b>V V</b>	160*100cm,250*130cm
3color+2white+1varnish	6pcs	<b>K C M Y LC LM</b> W W W W <b>V V</b>	160*100cm,250*130cm

## PRODUCT PARAMETERS

<b>NAME</b>	Large Format Digital UV Flatbed Printer
<b>MODEL NO.</b>	RH1610/RH2513
<b>PRINT SIZE</b>	1600*1000mm/2500*1300mm
<b>PRINT HEAD</b>	Ricoh Gen5
<b>PRINT HEAD QUANTITY</b>	3~6
<b>PRINT COLOR</b>	KCMYLcLmWWWV
<b>PRINT HEIGHT</b>	100mm
<b>CURING SYSTEM</b>	2 * LED UV
<b>PRINT FORMAT</b>	TIFF, PSD, JPG, etc
<b>CLEANING SYSTEM</b>	Auto Positive Pressure Printing
<b>INTERFACE</b>	USB2.0
<b>OPERATION SYSTEM</b>	Windows 7/ Windows 8/ Windows 10
<b>POWER REQUIREMENT</b>	50/60HZ 220V(±10%) < 20A;
<b>TEMPERATURE/HUMIDITY</b>	68–82°F HR40–60%
<b>RIP SOFTWARE</b>	PhotoPrint
<b>PRINTER WEIGHT</b>	615kg (1356lb)/820kg (1807.79lb)
<b>PRINTER SIZE</b>	313cm*175cm*135cm (123"*69"*53")
<b>PACKING WEIGHT</b>	1400kg (3086lb)/1570kg (3461lb)
<b>PACKING SIZE</b>	377*196*162cm/467cm*227cm*170cm



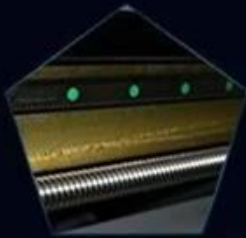
## FEATURES



Platform locating function



Suction platform segment control



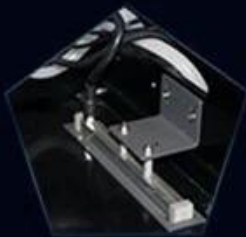
Double guide, double screw



X,Y axis uses three groups of servo systems



Automatic height detector, ink carriage anti-collision



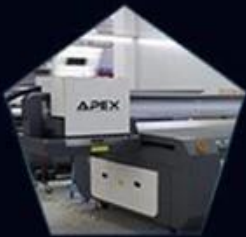
Ink carriage with Anti-static device



high sensitive printer anti-collision, safe operation



The color separation cleaning device has high washout rate and better



Environmental friendly LED-UV curing



Support CMYK, White and Varnish synchronization output

## OUR ADVANTAGES

### MACHINE DESIGN ADVANTAGES:

- Durable parts for industrial production.
- Emergency stop switches make it easy to stop operation from any corner of the printer.
- The inside of Printer head has heating function, printing won't be affected by temperature, and no need water cooling system to keep constant temperature.
- Jet force of Ricoh GEN5 printer head is better than Toshiba, there will be no printing affect even space between 3mm.
- Printer is equipped with electrostatic air gun, infrared radiation and anti-collision device on the carriage.

### OUTSTANDING PRINTING SPEED AND QUALITY:

- Industrial fast printing speed, only 15'06" for full size printing 160\*100cm.
- UV curing ink can print in varies materials directly, it can get perfect high performance in color and productivity.

### MACHINE STRUCTURE FEATURES:

- Zero positioning assistant system.
- High-precision, high-thickness integrated platform.
- Equipped with vacuum table with Strong material adsorption, easy to feed materials.
- Automatic height measurement system.
- High-sensitivity collision avoidance system.
- Printer head with inner heating temperature controller.
- white ink stirring system.
- Print the color ink and white ink at the same time.
- Y axis adopts imported wire rod and guide rail.
- XY axis adopts high quality servo motor.
- Support the color ink, white ink and varnish oil synchronization output.

### MACHINE STRUCTURE FEATURES:

- Ricoh GEN5 printhead has 5-8 gray scale piezoelectric nozzles, variable ink drop printing, minimum 7pl photo level accuracy, can clearly print 2pt fonts, the maximum resolution up to 1440\*1200dpi. Head carriage positioning using a fixed linear grating to ensure high-precision print positioning.
- It has a high degree of printing characteristics, 6 pass bidirectional 13 square meters per hour.
- The maximum print height is 100mm, suitable for printing on glass, acrylic, wood, ceramic tile, metal plate, PVC plate, plastic and other materials.
- Save ink up to 30%-50%
- This printing speed is faster than normal Epson and Toshiba printhead printer, life-time is much longer as well.
- You can set different printing pass to meet your printing result.
- Auto Height Sensor: Smartly Detect the Distance between Media and Printer Head
- UV Light Brightness Switch: Adjustable UV light Brightness to Fit Curing Needs
- Auto Positive Pressure Cleaning System

Machine design advantages:

- Durable parts for industrial production.
- Emergency stop switches make it easy to stop operation from any corner of the printer.
- The inside of Printer head has heating function, printing won't be affected by temperature, and no need water cooling system to keep constant temperature.
- Jet force of Ricoh GEN5 printer head is better than Toshiba, there will be no printing affect even space between 3mm.
- Printer is equipped with electrostatic air gun, infrared radiation and anti-collision device on the carriage.

#### **Outstanding printing speed and quality:**

- Industrial fast printing speed, only 15'06" for full size printing 160\*100cm.
- UV curing ink can print in varies materials directly, it can get perfect high performance in color and productivity.

#### **Machine structure features:**

- Zero positioning assistant system.
- High-precision, high-thickness integrated platform.
- Equipped with vacuum table with Strong material adsorption, easy to feed materials.
- Automatic height measurement system.
- High-sensitivity collision avoidance system.
- Printer head with inner heating temperature controller.
- white ink stirring system.
- Print the color ink and white ink at the same time.
- Y axis adopts imported wire rod and guide rail.
- XY axis adopts high quality servo motor.
- Support the color ink, white ink and varnish oil synchronization output.

#### **Printing quality and speed:**

- Ricoh GEN5 printhead has 5-8 gray scale piezoelectric nozzles, variable ink drop printing, minimum 7pl photo level accuracy, can clearly print 2pt fonts, the maximum resolution up to 1440\*1200dpi. Head carriage positioning using a fixed linear grating to ensure high-precision print positioning.
- It has a high degree of printing characteristics, 6 pass bidirectional 13 square meters per hour.
- The maximum print height is 100mm, suitable for printing on glass, acrylic, wood, ceramic tile, metal plate, PVC plate, plastic and other materials.
- Save ink up to 30%-50%
- This printing speed is faster than normal Epson and Toshiba printhead printer, life-time is much longer as well.
- You can set different printing pass to meet your printing result.
- Auto Height Sensor: Smartly Detect the Distance between Media and Printer Head
- UV Light Brightness Switch: Adjustable UV light Brightness to Fit Curing Needs
- Auto Positive Pressure Cleaning System

## **Specification:**

<b>Model No.</b>	RH1610
<b>UV Curing System</b>	UV LED Water Cooling System
<b>Materials to Print</b>	metal, plastic, glass, wood, ceramics, acrylic, leather, pen, etc.
<b>Max. Print Format</b>	62.99"*39.37" (160*100cm)
<b>Max. Print Gap</b>	10cm(3.94")
<b>Power Consumption</b>	3800W
<b>Power Requirement</b>	50/60HZ 220V(±10%)<20A
<b>Environment</b>	20 ~ 28C HR40-60%
<b>Print Head</b>	Ricoh GEN5 (Nozzles 320X4), printer heads can be 3~6pcs.

<b>RIP Software</b>	SAi PhotoPrint DX Plus
<b>Software Language</b>	English/Chinese/German/Italian/Japanese/Korean/French/Finnish/Dutch/Portuguese/Spanish
<b>Operation System</b>	Windows 7/Windows10
<b>Ink Type</b>	UV ink
<b>Ink Color</b>	KCMYWW /KCMYLcLmWW /KCMYLcLmWWWV
<b>Ink Supply System</b>	CISS Built Inside With Ink Bottle
<b>Interface</b>	USB2.0
<b>Machine Gross Weight</b>	1200kg
<b>Packing Dimension</b>	377*196*162cm
<b>Packing</b>	Strong Wooden Package with Full Foam

## Display:











[www.apex-jet.com](http://www.apex-jet.com)

# ADVANCED EQUIPMENTS





# PROFESSIONAL R&D TEAM





# OUR EXHIBITIONS



# CUSTOMER VISITING





# ENGINEERS ON-SITE SUPPORT

