

Description:

Are you looking for large format printer ?

NEW APEX UV2513
is recommend
to you!



Equipped with TOSHIBA CE4 Print Head

High density nozzles, as many as 636, dot frequency is 28KHZ which will help to achieve a high print speed. Spray ink can reach 300 billion times without clogging and ablique, but with long durable life. 8 Levels grey scale, 5PL ink drop size, with a high resolution.

Certificated Ink

Ink is get supplier certificated, pass SGS certification. Without any components which may damage print head, which will prolong the service life of the printer head. And the ink is high density and wide color gamut.

High Precision Printer Head Base Board

Printer head base board is OEM by professional factory with high-precise process. Error is less than 0.01mm to improve print accuracy.

Stable Accessories

All accessories of the ink system are certified and stable working, without any chemical reaction with ink.

Professional RIP software

User interface is simple, easy to understand and operate. Efficient workflow, and excellent image handling, rich color management tools, professional color processing.

Printer Head Anti-Collision System

Printer Head is installed with Anti-collision system to prevent any damage from accidents caused by human error or material deformation.

Feature:

Model No.	UV2513
UV Curing System	UV LED Water Cooling System
Materials to Print	metal, plastic, glass, wood, ceramics, acrylic, leather, pen, etc.
Max. Print Format	98.43"*51.18" (250*130cm)
Max. Print Gap	10cm(3.94")
Power Consumption	3800W
Power Requirement	50/60HZ 220V(±10%)<20A
Environment	20 ~ 28C HR40-60%

Print Head	Toshiba CE4 (Nozzles 318X2), printer heads can be 5~10pcs.
RIP Software	SAi PhotoPrint DX Plus
Software Language	English/Chinese/German/Italian/Japanese/Korean/French/Finnish/Dutch/Portuguese/Spanish
Operation System	Windows 7 /Windows 8 /Windows10
Ink Type	UV ink
Ink Color	KCMYWW /KCMYLcLmWW /KCMYLcLmWWV
Ink Supply System	CISS Built Inside With Ink Bottle
Interface	USB3.0
Machine Gross Weight	1300kg
Packing Dimension	467*227*170cm
Packing	Strong Wooden Package with Full Foam

Display:



Equipped with TOSHIBA CE4 Head ▲

High density nozzles, as many as 636, dot frequency is 28KHZ which will help to achieve a high print speed. Spray ink can reach 300 billion times without clogging and ablique, but with long durable life. 8 Levels grey scale, 5PL ink drop size, with a high resolution.



Easy Operation Control Panel ▲

Which will make you to use this printer without any confuse. Also all the button is installed with direction and different color to show its functions.



Low Water Indicator ▲

This Button will on if the water cooling system need to be refill with water.



Cleaning Button ▲

These two button will allow you to operate the cleaning easy.



Print Head Temp ▲

This indicator will show the status of the printer head.



Pressure Gauge ▲

It will show the Pressure the ink.



Certificated Ink ▲

Installed box for the ink bottle which is most space-saving and good looking. Also the Ink is get supplier certificated, pass SGS certification. Without any components which may damage print head, which will prolong the service life of the printer head. And the ink is high density and wide color gamut.



Professional Water Cooling System ▲

Water's high specific heat capacity, density, and thermal conductivity, allows water to transmit heat more easily. So it can more efficiently cool down UV LED light, in order to prolong its lifetime.



Vacuum Table ▲

Consists of a typically flat rigid surface in which exists small holes to evacuate air from under a workpiece, as to apply varying vacuum from between the desired workpiece and table to maintain a clamping force. To make the soft printing materials like leather more smooth and level, so as to get the best printing result.

Digital Product Cover ☐☐

Apex UV flatbed printers are widely used in a variety of industries:

Advertising industry: ABS, Polyurethane, PET, Acrylic, MDF, PVC, etc, for signs, banner, backlight, tags, etc.

Leather industry: Authentic leather, fake leather, PU, etc. for shoes, bags, cases, etc.

Background wall: Glass, tiles, aluminum, wood, paper, etc.

Furniture industry: Wood, glass etc. for cupboard, sofa, doors, etc.

Electronic accessories: Mobile phone cases, industrial products cases, etc.

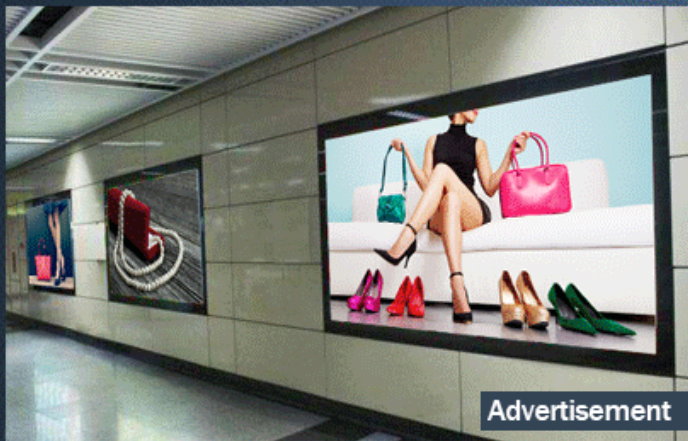
Gifts printing: Plastics, USB memory card, Stone, Pens, name card case, glass arms, wrist watch belt, wrist bands, etc.

Decoration: Exhibition stand decoration, home decoration, wallpaper, hotel decoration, etc.

Industrial printing: membrane switch, touch panel, home appliance printing, etc.

Application:





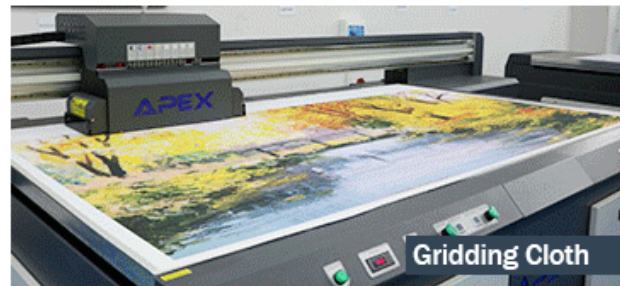
Advertisement



Decorative Sticker



Car Sticker



Gridding Cloth