

Description:

Newest Large Format UV Printer RH1610/RH2513

Features

- With Ricoh GEN5 printer head
- Fast speed, high precision, bright color
- High-sensitivity collision avoidance system.
- Vacuum table with strong material adsorption
- Zero positioning assistant system
- Automatic height measurement system
- Printer head with inner heating temperature controller
- White ink stirring system



RICOH SERIES UV PRINTER LARGE FORMAT

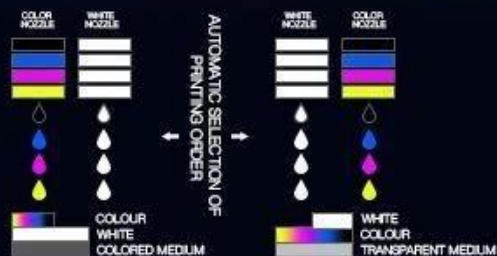
RICOH GEN5 HEAD • ANTI COLLISION • SAFE OPERATION • INDUSTRIAL FAST SPEED



Scan for more information



Layer1 varnish oil
Layer2 color Ink
Layer3 white ink
Three layers can be printed at one time



APPLICATION SCENE



Phone case



Outdoor advertising



Subway advertising



Car body sticker



Ground advertising

COLOR SCHEMES



Ricoh Gen5 Print Heads Arrangement (3~6pcs Heads Options) RH1610/ RH1610GM/ RH2513: Single Head Double Color

| Print Heads Color | Print Heads Quantity | Color Arrangement | Print Area |
|------------------------|----------------------|---|---------------------|
| 2color+1white | 3pcs | K C M Y W W | 160*100cm,250*130cm |
| 3color+1white | 4pcs | K C M Y LC LM W W | 160*100cm,250*130cm |
| 2color+1white+1varnish | 4pcs | K C M Y W W V V | 160*100cm,250*130cm |
| 3color+1white+1varnish | 5pcs | K C M Y LC LM W W V V | 160*100cm,250*130cm |
| 2color+2white | 4pcs | K C M Y W W W W | 160*100cm,250*130cm |
| 3color+2white | 5pcs | K C M Y LC LM W W W W | 160*100cm,250*130cm |
| 2color+2white+1varnish | 5pcs | K C M Y W W W W V V | 160*100cm,250*130cm |
| 3color+2white+1varnish | 6pcs | K C M Y LC LM W W W W V V | 160*100cm,250*130cm |

PRODUCT PARAMETERS

| | |
|-----------------------------|---|
| NAME | Large Format Digital UV Flatbed Printer |
| MODEL NO. | RH1610/RH2513 |
| PRINT SIZE | 1600*1000mm/2500*1300mm |
| PRINT HEAD | Ricoh Gen5 |
| PRINT HEAD QUANTITY | 3~6 |
| PRINT COLOR | KCMYLcLmWWWV |
| PRINT HEIGHT | 100mm |
| CURING SYSTEM | 2 * LED UV |
| PRINT FORMAT | TIFF, PSD, JPG, etc |
| CLEANING SYSTEM | Auto Positive Pressure Printing |
| INTERFACE | USB2.0 |
| OPERATION SYSTEM | Windows 7/ Windows 8/ Windows 10 |
| POWER REQUIREMENT | 50/60HZ 220V(±10%) < 20A; |
| TEMPERATURE/HUMIDITY | 68-82°F HR40-60% |
| RIP SOFTWARE | PhotoPrint |
| PRINTER WEIGHT | 615kg (1356lb)/820kg (1807.79lb) |
| PRINTER SIZE | 313cm*175cm*135cm (123"*69"*53") |
| PACKING WEIGHT | 1400kg (3086lb)/1570kg (3461lb) |
| PACKING SIZE | 377*196*162cm/467cm*227cm*170cm |

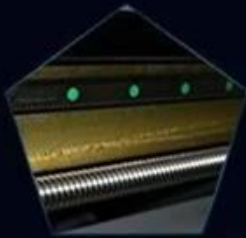
FEATURES



Platform locating function



Suction platform segment control



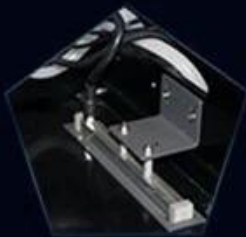
Double guide, double screw



X,Y axis uses three groups of servo systems



Automatic height detector, ink carriage anti-collision



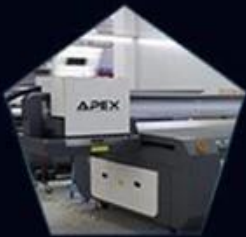
Ink carriage with Anti-static device



high sensitive printer anti-collision, safe operation



The color separation cleaning device has high washout rate and better



Environmental friendly LED-UV curing



Support CMYK, White and Varnish synchronization output

OUR ADVANTAGES

MACHINE DESIGN ADVANTAGES:

- Durable parts for industrial production.
- Emergency stop switches make it easy to stop operation from any corner of the printer.
- The inside of Printer head has heating function, printing won't be affected by temperature, and no need water cooling system to keep constant temperature.
- Jet force of Ricoh GEN5 printer head is better than Toshiba, there will be no printing affect even space between 3mm.
- Printer is equipped with electrostatic air gun, infrared radiation and anti-collision device on the carriage.

OUTSTANDING PRINTING SPEED AND QUALITY:

- Industrial fast printing speed, only 15'06" for full size printing 160*100cm.
- UV curing ink can print in varies materials directly, it can get perfect high performance in color and productivity.

MACHINE STRUCTURE FEATURES:

- Zero positioning assistant system.
- High-precision, high-thickness integrated platform.
- Equipped with vacuum table with Strong material adsorption, easy to feed materials.
- Automatic height measurement system.
- High-sensitivity collision avoidance system.
- Printer head with inner heating temperature controller.
- white ink stirring system.
- Print the color ink and white ink at the same time.
- Y axis adopts imported wire rod and guide rail.
- XY axis adopts high quality servo motor.
- Support the color ink, white ink and varnish oil synchronization output.

MACHINE STRUCTURE FEATURES:

- Ricoh GEN5 printhead has 5-8 gray scale piezoelectric nozzles, variable ink drop printing, minimum 7pl photo level accuracy, can clearly print 2pt fonts, the maximum resolution up to 1440*1200dpi. Head carriage positioning using a fixed linear grating to ensure high-precision print positioning.
- It has a high degree of printing characteristics, 6 pass bidirectional 13 square meters per hour.
- The maximum print height is 100mm, suitable for printing on glass, acrylic, wood, ceramic tile, metal plate, PVC plate, plastic and other materials.
- Save ink up to 30%-50%
- This printing speed is faster than normal Epson and Toshiba printhead printer, life-time is much longer as well.
- You can set different printing pass to meet your printing result.
- Auto Height Sensor: Smartly Detect the Distance between Media and Printer Head
- UV Light Brightness Switch: Adjustable UV light Brightness to Fit Curing Needs
- Auto Positive Pressure Cleaning System

□□□□□□

• □□□□□□□□

- 印刷速度が速い
- 印刷コストが安い
- Ricoh Gen5 3mm 厚紙対応
- 印刷精度が高い

印刷速度

- 印刷速度が速い 15'06" 160 * 100
- 印刷速度が速い

印刷精度

- 印刷精度が高い
- 印刷精度が高い
- 印刷精度が高い
- 印刷精度が高い
- 印刷精度が高い
- 印刷精度が高い
- 印刷精度が高い
- 印刷精度が高い
- Y 印刷精度が高い
- XY 印刷精度が高い
- 印刷精度が高い

印刷コスト

- Ricoh Gen5 Printhead 5-8 7p 2pt 1440 * 1200dpi

印刷速度

- 印刷速度が速い 6 13 /
- 印刷速度が速い 100mm PVC
- 印刷速度が速い 30-50
- 印刷速度が速い EPSON TOSHIBA
- 印刷速度が速い
- 印刷速度が速い
- 印刷速度が速い
- 印刷速度が速い

Specification:

| | |
|------|-----------------------------------|
| 型番 | RH2513 |
| UV | UV LED |
| 印刷速度 | 印刷速度が速い |
| 印刷精度 | 98.43" * 51.18" 250 * 130 |
| 印刷速度 | 10 3.94" |
| 印刷速度 | 3800W |
| 印刷速度 | 50 / 60Hz 220V ±10 <20A |
| 印刷速度 | 20 28c hr40-60 |
| 印刷速度 | Ricoh Gen5 320x4 3 6pcs |
| RIP | Sai Photoprint DX Plus |
| 印刷速度 | 印刷速度が速い |
| 印刷速度 | Windows 7 / Windows 8 / Windows10 |
| 印刷速度 | UV |
| 印刷速度 | KCMYWW / KCMYLCLMWW / KCMYLCLMWWV |
| 印刷速度 | CISS |
| 印刷速度 | USB2.0. |
| 印刷速度 | 1300kg. |
| 印刷速度 | 467 * 227 * 170cm |

Display:







www.apex-jet.com

PROFESSIONAL R&D TEAM



OUR EXHIBITIONS



