

CAN YOU PRINT 0~75CM HEIGHT MATERIALS?

YES WE CAN!

- Ricoh gen5 print heads ensure fast printing
- 2 in 1 multi-function platforms
- Print size: left side 800*1000mm + right side 600*800mm
- Print height: left side 0~100mm + right side 0~750mm
- Right side equipped with 65cm height adjustable lifting platform

Model No.: RH1610GM



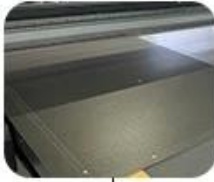
COLOR SCHEMES



Ricoh Gen5 Print Heads Arrangement (3~6pcs Heads Options) RH1610/ RH1610GM/ RH2513: Single Head Double Color

Print Heads Color	Print Heads Quantity	Color Arrangement	Print Area
2color+1white	3pcs	K C M Y W W	160*100cm,250*130cm
3color+1white	4pcs	K C M Y LC LM W W	160*100cm,250*130cm
2color+1white+1varnish	4pcs	K C M Y W W V V	160*100cm,250*130cm
3color+1white+1varnish	5pcs	K C M Y LC LM W W V V	160*100cm,250*130cm
2color+2white	4pcs	K C M Y W W W W	160*100cm,250*130cm
3color+2white	5pcs	K C M Y LC LM W W W W	160*100cm,250*130cm
2color+2white+1varnish	5pcs	K C M Y W W W W V V	160*100cm,250*130cm
3color+2white+1varnish	6pcs	K C M Y LC LM W W W W V V	160*100cm,250*130cm

RH1610GM



Left platform:

Equipped with air suction device
0-100mm printing height
Max. print volume: W800*L1000*H100mm



Right platform:

Equipped with 0-650mm height adjustable lifting system
Max. print volume: W600*L800*H750mm



- Ricoh gen5 print heads ensure fast printing
- In total 1000*1600mm size platform



Well Configured:

Printer is equipped with electrostatic air gun, infrared radiation and anti-collision device on the carriage.

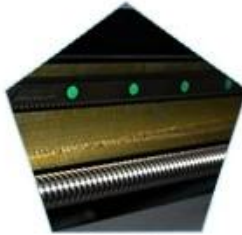
FEATURES



Platform locating
function



Suction platform
segment control



Double
guide, double screw



X,Y axis uses three
groups of servo



Automatic height
detector, ink carriage
anti-collision



Ink carriage with
Anti-static device



high sensitive
printer
anti-collision, safe
operation



The color
separation cleaning
device has high
washout rate and
better ink saving



Environmental
friendly LED-UV
curing



Support CMYK,
White and Varnish
synchronization
output

ADVANTAGES

Machine design advantages:



- Can print 0~75CM height materials
- Left platform equipped with air suction device
- Right platform equipped with 0~650mm height adjustable lifting system
- Durable parts for industrial production.
- Emergency stop switches make it easy to stop operation from any corner of the printer.
- The inside of Printer head has heating function, printing won't be affected by temperature, and no need water cooling system to keep constant temperature.
- Jet force of Ricoh GEN5 printer head is better than Toshiba, there will be no printing affect even space between 3mm.
- Printer is equipped with electrostatic air gun, infrared radiation and anti-collision device on the carriage.

Machine structure features:

- APEX brand new 2 in 1 multi-function platforms UV printer
- Print Size: Left Side 800*1000mm + Right Side 600*800mm
- Print Height: Left Side 0~100mm + Right Side 0~750mm
- Zero positioning assistant system.
- High-precision, high-thickness integrated platform.
- Equipped with vacuum table with Strong material adsorption, easy to feed materials.
- Automatic height measurement system.
- High-sensitivity collision avoidance system.
- Printer head with inner heating temperature controller.
- white ink stirring system.
- Print the color ink and white ink at the same time.
- Y axis adopts imported wire rod and guide rail.
- XY axis adopts high quality servo motor.
- Support the color ink, white ink and varnish oil synchronization output.



Outstanding printing speed and quality:



- Industrial fast printing speed, only 15'06" for full size printing 160*100cm.
- UV curing ink can print in varies materials directly, it can get perfect high performance in color and productivity.
- Ricoh GEN5 printhead has 5–8 gray scale piezoelectric nozzles, variable ink drop printing, minimum 7pl photo level accuracy, can clearly print 2pt fonts, the maximum resolution up to 1440*1200dpi. Head carriage positioning using a fixed linear grating to ensure high–precision print positioning.
- It has a high degree of printing characteristics, 6 pass bidirectional 13 square meters per hour.
- Save ink up to 30%–50%.
- This printing speed is faster than normal Epson and Toshiba printhead printer, life–time is much longer as well.
- You can set different printing pass to meet your printing result.
- Auto Height Sensor: Smartly Detect the Distance between Media and Printer Head.
- UV Light Brightness Switch: Adjustable UV light Brightness to Fit Curing Needs.
- Auto Positive Pressure Cleaning System.

Various of UV Printing Materials:

- suitable for printing on glass, acrylic, wood, ceramic tile, metal plate, PVC plate, plastic and other materials.



APPLICATION



SPECIFICATION

Model No.	RH1610GM
Print Size	Left Side 800*1000mm/ Right Side 600*800mm (1600*1000mm in Total)
Max. Print Height	Left side H100mm Right side H100mm+H650mm Height Adjustable=H750mm
Multi-function Print Platform	2 IN 1 Multi-function Platform Left Platform Equipped with Air Suction Device Right Platform Equipped with 650mm Height Adjustable Lifting System
Print Head	Ricoh Gen5
Print Head Quantity	3~6
Print Color	KCMYLcLmWWV
Print Resolution	720*2400dpi 16pass
Curing System	2 * LED UV
Print Format	TIFF, PSD, JPG, etc
Cleaning System	Auto Positive Pressure Printing
Interface	USB2.0
Operation System	Windows 7 / Windows 10
Power Requirement	50/60HZ 220V(±10%) <20A
Temperature/Humidity	68-82°F HR40-60%
RIP Software	PhotoPrint
Printer Weight	665kg
Printer Size	313*181*143cm
Packing Weight	1450kg
Packing Size	377*199*176cm

GALLERY



Microtec/Apex's main objective is to support all our customers, who can manage their APEX UV printers activities without interruption. So Apex offers FREE SPARE PARTS with a quantitative order and the following guarantee:

- * Free lifetime technical support online for all apex printers.
- * One year warranty for the whole machine excluding printer heads
- * Three months warranty on the consumable parts like dampers, cap tops, etc.
- * Five professional English engineer available to provide onsite service if customer needed(customers pay onsite service charge, bear tickets and accommodation)



-
- 800 * 1000mm + 600 * 800mm
- 0~100mm + 0~750mm
- 65cm
-
-
-
-
-
-
-
-
-
-
- Y
- XY
-

- Ricoh Gen5 Printhead 5~8 7p 2pt 1440 * 1200dpi
- 6 13
- 100mm PVC
- 30~50
- EPSON
-
- UV
-

Specification:	
□	RH1610GM
□	800 * 1000mm / 600 * 800mm 1600x1000mm
□	H100MM H100MM + H650mm = H750mm
□	2 1 650mm
□	Ricoh Gen5 320x4 3~6
UV	UV LED
□	
□	3800W
□	50 / 60Hz 220V ±10% <20A
□	20~28C HR40-60
RIP	SAI Photoprint DX Plus.
□	Windows 7 / Windows10.
□	
□	KCMYWW / KCMYLCLMWW / KCMYLCLMWWVV
□	
□	USB2.0
□	313 * 181 * 143cm
□	665kg
□	1450kg
□	377 * 199 * 176cm

Display:









PROFESSIONAL R&D TEAM



OUR EXHIBITIONS



CUSTOMER VISITING



ENGINEERS ON-SITE SUPPORT

