

Description:

APEX UV1610 UV printer is a large format printer with a print size of 160x100cm. It is designed for high-quality printing on various materials.

The printer features a CE4 print head, which provides excellent print quality and durability. It is suitable for printing on a wide range of substrates.

The APEX UV1610 is a professional-grade printer that offers a large format printing solution. It is ideal for businesses looking to expand their printing capabilities.



The CE4 print head is a key feature of the APEX UV1610. It uses a 636nm UV LED light source with a frequency of 28KHz. The printer has a maximum print speed of 300cm/min and a resolution of 8000x5000 dots/inch.

The printer is equipped with a SGS certified power supply, ensuring safe and reliable operation. It is designed to meet the highest standards of quality and safety.

The printer is available in OEM configurations, with a minimum order quantity of 0.01mm. It is a versatile and reliable printing solution for various applications.

The printer is designed for easy installation and operation. It features a user-friendly interface and a robust build.

The printer is compatible with RIP software, allowing for easy integration into existing workflows. It is a professional-grade printer that meets the needs of large format printing.

The printer is a reliable and efficient printing solution for businesses looking to expand their printing capabilities. It offers a large format printing solution that is both high-quality and durable.

Specification:

Model	UV1610
Light Source	UV LED
Print Size	62.99 " * 39.37 " (160 * 100 cm)
Print Resolution	10cm (3.94 inch)
Power	3800W
Voltage	50 / 60HZ 220V ±10% <20A

型番	2028C HR40-60
印刷方式	CE4 318×210mm 5色フルカラー
RIP	DX
対応OS	Windows 7 / Windows 8 / Windows 10
印刷色	UV
色再現性	KCMYWW / KCMYLcLmWW / KCMYLcLmWWW
印刷方式	CISS
インターフェース	USB3.0
重量	1200kg
寸法	377×196×162cm
付属品	

Display:



Equipped with TOSHIBA CE4 Head ▲

High density nozzles, as many as 636, dot frequency is 28KHZ which will help to achieve a high print speed. Spray ink can reach 300 billion times without clogging and ablique, but with long durable life. 8 Levels grey scale, 5PL ink drop size, with a high resolution.



Easy Operation Control Panel ▲

Which will make you to use this printer without any confuse. Also all the button is installed with direction and different color to show its functions.



Low Water Indicator ▲

This Button will on if the water cooling system need to be refill with water.



Cleaning Button ▲

These two button will allow you to operate the cleaning easy.



Print Head Temp ▲

This indicator will show the status of the printer head.



Pressure Gauge ▲

It will show the Pressure the ink.



Certificated Ink ▲

Installed box for the ink bottle which is most space-saving and good looking. Also the Ink is get supplier certificated, pass SGS certification. Without any components which may damage print head, which will prolong the service life of the printer head. And the ink is high density and wide color gamut.



Professional Water Cooling System ▲

Water's high specific heat capacity, density, and thermal conductivity, allows water to transmit heat more easily. So it can more efficiently cool down UV LED light, in order to prolong its lifetime.



Vacuum Table ▲

Consists of a typically flat rigid surface in which exists small holes to evacuate air from under a workpiece, as to apply varying vacuum from between the desired workpiece and table to maintain a clamping force. To make the soft printing materials like leather more smooth and level, so as to get the best printing result.

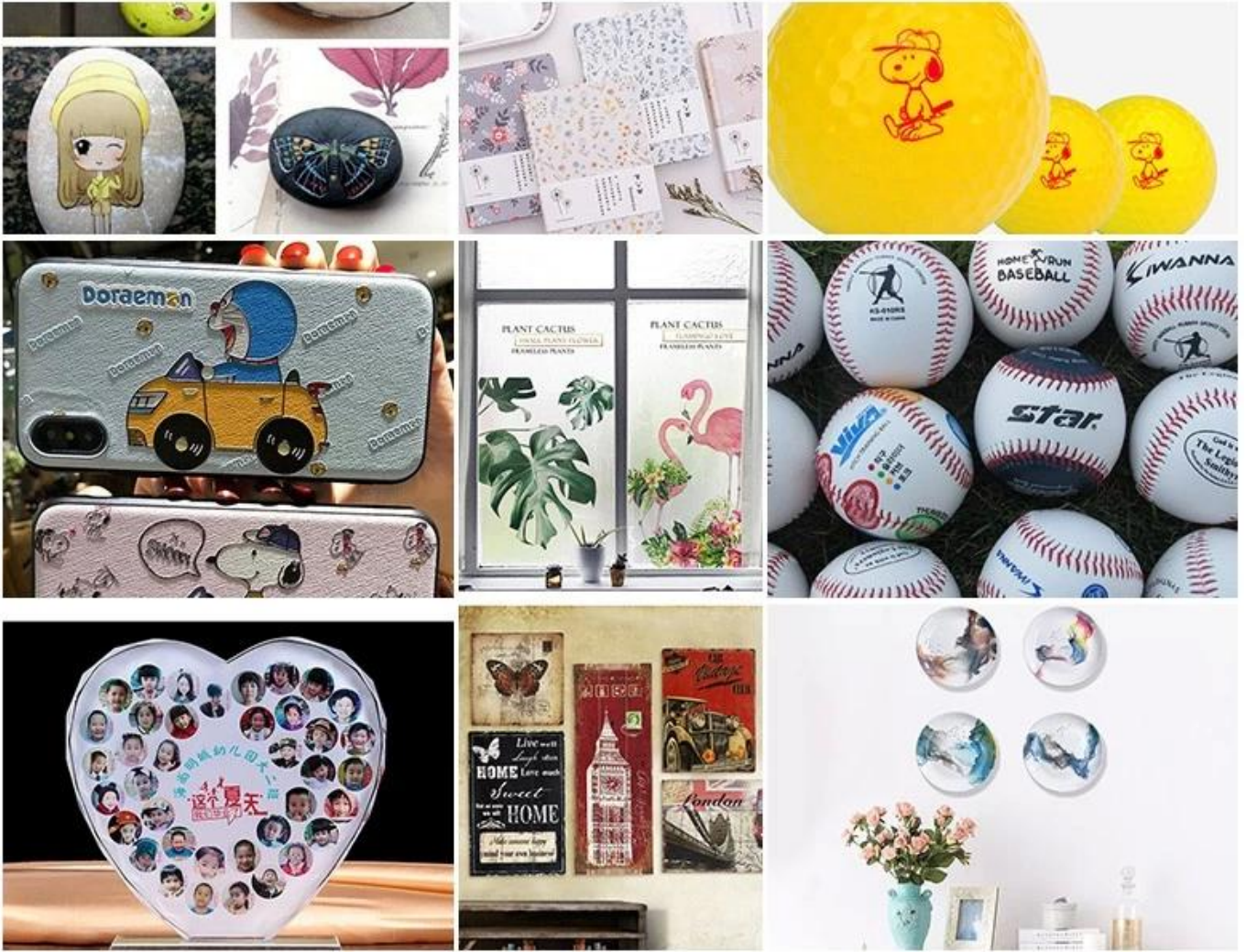




www.apex-jet.com

Application:

Apex UV1610 UV



Warranty:

Microtec / Apex 产品 APEX UV 产品 Apex

* 1

* 1

* 3

* 5