

Description:

APEX UV1610 [digital large format UV Flatbed Printer](#) is a general large format size suitable for both bulk production and [big size printing](#) demands. It is installed with 5~10 [Toshiba head](#) and designed for industrial production with fast printing speed, which can print on almost any material directly. With [UV light](#) irradiating during printing procedure, images on object surface dry fast, scratch resistance and [uv-proof](#).

This [uv led printer](#) use [Toshiba CE4 printer heads](#) which can print on any flat material & objects, like pens, acrylic, wood, metal, crystal, plastic, phone cases etc. With Toshiba CE4 printer heads, the printing is very fast and the quality is perfect in details, even human face in [full size printing](#).

If you need an [industrial large format UV printer](#), [APEX UV1610](#) is highly recommended, whether you need an [advertising PVC board uv printer](#), [phone case uv printer](#), or [acrylic uv printer](#), etc.



COLOR SCHEMES



Toshiba CE4 Print Heads Arrangement (5~12pcs Heads Options) UV1610/UV2513: Single Head Single Color			
Print Heads Color	Print Heads Quantity	Color Arrangement	Print Area
4color+1white	5pcs	K C M Y W	160*100cm,250*130cm
4color+1white+1varnish	6pcs	K C M Y W V	160*100cm,250*130cm
6color+1white	7pcs	K C M Y LC LM W	160*100cm,250*130cm
6color+1white+1varnish	8pcs	K C M Y LC LM W V	160*100cm,250*130cm
4color+2white	6pcs	K C M Y W W	160*100cm,250*130cm
6color+2white	8pcs	K C M Y LC LM W W	160*100cm,250*130cm
4color+2white+2varnish	8pcs	K C M Y W W V V	160*100cm,250*130cm
6color+2white+2varnish	10pcs	K C M Y LC LM W W V V	160*100cm,250*130cm
4color*2+4white	12pcs	K K C C M M Y Y W W W W	160*100cm,250*130cm

Equipped with TOSHIBA CE4 Print Head

High density nozzles, as many as 636, dot frequency is 28KHZ which will help to achieve a high print speed. Spray ink can reach 300 billion times without clogging and ablique, but with long durable life. 8 Levels grey scale, 5PL ink drop size, with a high resolution.

Certificated Ink

Ink is get supplier certificated, pass SGS certification. Without any components which may damage print head, which will prolong the service life of the printer head. And the ink is high density and wide color gamut.

High Precision Printer Head Base Board

Printer head base board is OEM by professional factory with high-precise process. Error is less than 0.01mm to improve print accuracy.

Stable Accessories

All accessories of the ink system are certified and stable working, without any chemical reaction with ink.

Professional RIP software

User interface is simple, easy to understand and operate. Efficient workflow, and excellent image handing, rich color management tools, professional color processing.

Printer Head Anti-Collision System

Printer Head is installed with Anti-collision system to prevent any damage from accidents caused by human error or material deformation.

Specification:

Model No.	UV1610
UV Curing System	UV LED Water Cooling System
Materials to Print	metal, plastic, glass, wood, ceramics, acrylic, leather, pen, etc.
Max. Print Format	62.99"*39.37" (160*100cm)
Max. Print Gap	10cm(3.94")
Power Consumption	3800W
Power Requirement	50/60HZ 220V(±10%)<20A
Environment	20 ~ 28C HR40-60%
Print Head	Toshiba CE4 (Nozzles 318X2), printer heads can be 5~10pcs.
RIP Software	SAi PhotoPrint DX Plus
Software Language	English/Chinese/German/Italian/Japanese/Korean/French/Finnish/Dutch/Portuguese/Spanish
Operation System	Windows 7 /Windows 8 /Windows10
Ink Type	UV ink
Ink Color	KCMYWW /KCMYLcLmWW /KCMYLcLmWWV
Ink Supply System	CISS Built Inside With Ink Bottle
Interface	USB3.0
Machine Gross Weight	1200kg
Packing Dimension	377*196*162cm
Packing	Strong Wooden Package with Full Foam

Display:



Equipped with TOSHIBA CE4 Head ▲

High density nozzles, as many as 636, dot frequency is 28KHZ which will help to achieve a high print speed. Spray ink can reach 300 billion times without clogging and ablique, but with long durable life. 8 Levels grey scale, 5PL ink drop size, with a high resolution.



Easy Operation Control Panel ▲

Which will make you to use this printer without any confuse. Also all the button is installed with direction and different color to show its functions.



Low Water Indicator ▲

This Button will on if the water cooling system need to be refill with water.



Cleaning Button ▲

These two button will allow you to operate the cleaning easy.



Print Head Temp ▲

This indicator will show the status of the printer head.



Pressure Gauge ▲

It will show the Pressure the ink.



Certificated Ink ▲

Installed box for the ink bottle which is most space-saving and good looking. Also the Ink is get supplier certificated, pass SGS certification. Without any components which may damage print head, which will prolong the service life of the printer head. And the ink is high density and wide color gamut.



Professional Water Cooling System ▲

Water's high specific heat capacity, density, and thermal conductivity, allows water to transmit heat more easily. So it can more efficiently cool down UV LED light, in order to prolong its lifetime.



Vacuum Table ▲

Consists of a typically flat rigid surface in which exists small holes to evacuate air from under a workpiece, as to apply varying vacuum from between the desired workpiece and table to maintain a clamping force. To make the soft printing materials like leather more smooth and level, so as to get the best printing result.

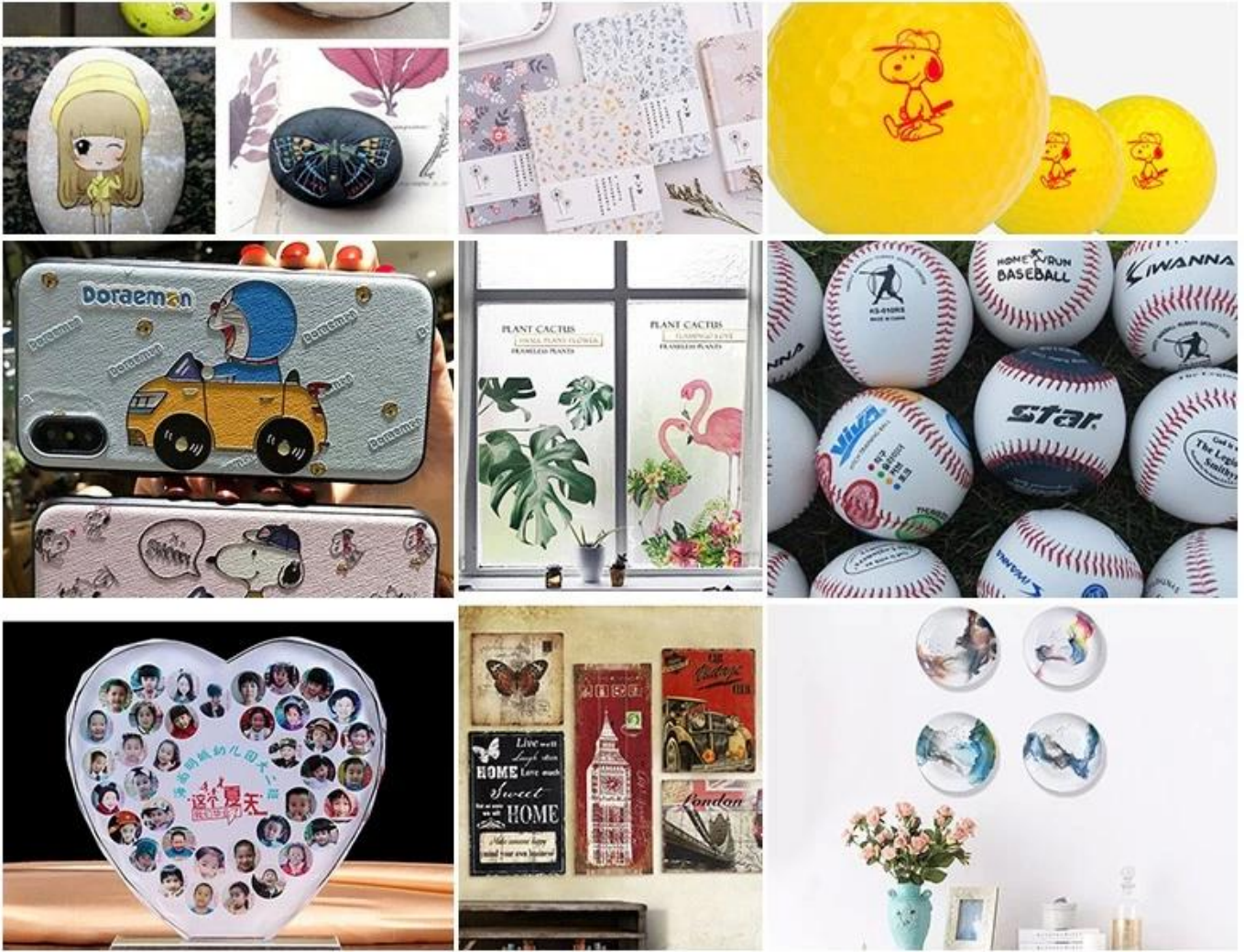




www.apex-jet.com

Application:

This Apex UV1610 UV printer is ideal with industrial use and can directly print on any flat materials with fast speed and high precision.



Warranty:

Microtec/Apex's main objective is to support all our customers, who can manage their APEX UV printers activities without interruption. So Apex offers FREE SPARE PARTS with a quantitative order and the following guarantee:

- * Free lifetime technical support online for all apex printers.
- * One year warranty for the whole machine excluding printer heads
- * Three months warranty on the consumable parts like dampers, cap tops, etc.
- * Five professional English engineer available to provide onsite service if customer needed(customers pay onsite service charge, bear tickets and accommodation)