

Description:

Newest Large Format UV Printer RH1610/RH2513

Features

- With Ricoh GEN5 printer head
- Fast speed, high precision, bright color
- High-sensitivity collision avoidance system.
- Vacuum table with strong material adsorption
- Zero positioning assistant system
- Automatic height measurement system
- Printer head with inner heating temperature controller
- White ink stirring system



RICOH SERIES UV PRINTER LARGE FORMAT

RICOH GEN5 HEAD • ANTI COLLISION • SAFE OPERATION • INDUSTRIAL FAST SPEED



Scan for more information



Layer1 varnish oil
Layer2 color Ink
Layer3 white Ink
Three layers can be
printed at one time



APPLICATION SCENE



Phone case



Outdoor advertising



Subway advertising



Car body sticker



Ground advertising

COLOR SCHEMES



Ricoh Gen5 Print Heads Arrangement (3~6pcs Heads Options)
RH1610/ RH1610GM/ RH2513: Single Head Double Color

Print Heads Color	Print Heads Quantity	Color Arrangement	Print Area
2color+1white	3pcs	K C M Y W W	160*100cm,250*130cm
3color+1white	4pcs	K C M Y LC LM W W	160*100cm,250*130cm
2color+1white+1varnish	4pcs	K C M Y W W V V	160*100cm,250*130cm
3color+1white+1varnish	5pcs	K C M Y LC LM W W V V	160*100cm,250*130cm
2color+2white	4pcs	K C M Y W W W W	160*100cm,250*130cm
3color+2white	5pcs	K C M Y LC LM W W W W	160*100cm,250*130cm
2color+2white+1varnish	5pcs	K C M Y W W W W V V	160*100cm,250*130cm
3color+2white+1varnish	6pcs	K C M Y LC LM W W W W V V	160*100cm,250*130cm

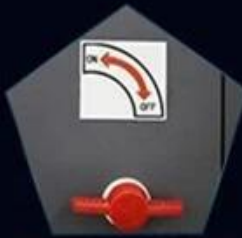
PRODUCT PARAMETERS

NAME	Large Format Digital UV Flatbed Printer
MODEL NO.	RH1610/RH2513
PRINT SIZE	1600*1000mm/2500*1300mm
PRINT HEAD	Ricoh Gen5
PRINT HEAD QUANTITY	3~6
PRINT COLOR	KCMYLCmWWV
PRINT HEIGHT	100mm
CURING SYSTEM	2 * LED UV
PRINT FORMAT	TIFF, PSD, JPG, etc
CLEANING SYSTEM	Auto Positive Pressure Printing
INTERFACE	USB2.0
OPERATION SYSTEM	Windows 7/ Windows 8/ Windows 10
POWER REQUIREMENT	50/60HZ 220V(±10%) < 20A;
TEMPERATURE/HUMIDITY	68-82°F HR40-60%
RIP SOFTWARE	PhotoPrint
PRINTER WEIGHT	615kg (1356lb)/820kg (1807.79lb)
PRINTER SIZE	313cm*175cm*135cm (123"*69"*53")
PACKING WEIGHT	1400kg (3086lb)/1570kg (3461lb)
PACKING SIZE	377*196*162cm/467cm*227cm*170cm

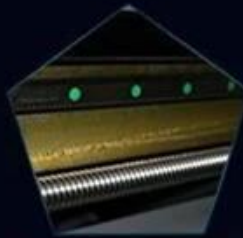
FEATURES



Platform locating function



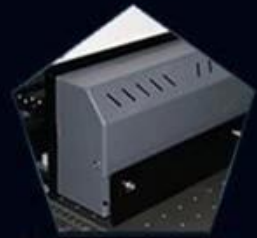
Suction platform segment control



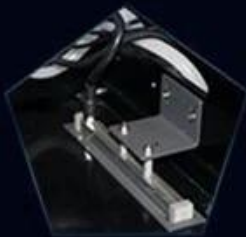
Double guide, double screw



X,Y axis uses three groups of servo systems



Automatic height detector, ink carriage anti-collision



Ink carriage with Anti-static device



high sensitive printer anti-collision, safe operation



The color separation cleaning device has high washout rate and better



Environmental friendly LED-UV curing



Support CMYK, White and Varnish synchronization output

OUR ADVANTAGES

MACHINE DESIGN ADVANTAGES:

- Durable parts for industrial production.
- Emergency stop switches make it easy to stop operation from any corner of the printer.
- The inside of Printer head has heating function, printing won't be affected by temperature, and no need water cooling system to keep constant temperature.
- Jet force of Ricoh GEN5 printer head is better than Toshiba, there will be no printing effect even space between 3mm.
- Printer is equipped with electrostatic air gun, infrared radiation and anti-collision device on the carriage.

OUTSTANDING PRINTING SPEED AND QUALITY:

- Industrial fast printing speed, only 15"/06" for full size printing 160*100cm.
- UV curing ink can print in various materials directly, it can get perfect high performance in color and productivity.

MACHINE STRUCTURE FEATURES:

- Zero positioning assistant system.
- High-precision, high-thickness integrated platform.
- Equipped with vacuum table with Strong material adsorption, easy to feed materials.
- Automatic height measurement system.
- High-sensitivity collision avoidance system.
- Printer head with inner heating temperature controller.
- white ink stirring system.
- Print the color ink and white ink at the same time.
- Y axis adopts imported wire rod and guide rail.
- XY axis adopts high quality servo motor.
- Support the color ink, white ink and varnish oil synchronization output.

MACHINE STRUCTURE FEATURES:

- Ricoh GEN5 printhead has 5-8 gray scale piezoelectric nozzles, variable ink drop printing, minimum 7pi photo level accuracy, can clearly print 2pt fonts, the maximum resolution up to 1440*1200dpi. Head carriage positioning using a fixed linear grating to ensure high-precision print positioning.
- It has a high degree of printing characteristics, 6 pass bidirectional 13 square meters per hour.
- The maximum print height is 100mm, suitable for printing on glass, acrylic, wood, ceramic tile, metal plate, PVC plate, plastic and other materials.
- Save ink up to 30%-50%
- This printing speed is faster than normal Epson and Toshiba printhead printer, life-time is much longer as well.
- You can set different printing pass to meet your printing result.
- Auto Height Sensor: Smartly Detect the Distance between Media and Printer Head
- UV Light Brightness Switch: Adjustable UV light Brightness to Fit Curing Needs
- Auto Positive Pressure Cleaning System

Machine design advantages:

- Durable parts for industrial production.
- Emergency stop switches make it easy to stop operation from any corner of the printer.
- The inside of Printer head has heating function, printing won't be affected by temperature, and no need water cooling system to keep constant temperature.
- Jet force of Ricoh GEN5 printer head is better than Toshiba, there will be no printing affect even space between 3mm.
- Printer is equipped with electrostatic air gun, infrared radiation and anti-collision device on the carriage.

Outstanding printing speed and quality:

- Industrial fast printing speed, only 15'06" for full size printing 160*100cm.
- UV curing ink can print in varies materials directly, it can get perfect high performance in color and productivity.

Machine structure features:

- Zero positioning assistant system.
- High-precision, high-thickness integrated platform.
- Equipped with vacuum table with Strong material adsorption, easy to feed materials.
- Automatic height measurement system.
- High-sensitivity collision avoidance system.
- Printer head with inner heating temperature controller.
- white ink stirring system.
- Print the color ink and white ink at the same time.
- Y axis adopts imported wire rod and guide rail.
- XY axis adopts high quality servo motor.
- Support the color ink, white ink and varnish oil synchronization output.

Printing quality and speed:

- Ricoh GEN5 printhead has 5-8 gray scale piezoelectric nozzles, variable ink drop printing, minimum 7pl photo level accuracy, can clearly print 2pt fonts, the maximum resolution up to 1440*1200dpi. Head carriage positioning using a fixed linear grating to ensure high-precision print positioning.
- It has a high degree of printing characteristics, 6 pass bidirectional 13 square meters per hour.
- The maximum print height is 100mm, suitable for printing on glass, acrylic, wood, ceramic tile, metal plate, PVC plate, plastic and other materials.
- Save ink up to 30%-50%
- This printing speed is faster than normal Epson and Toshiba printhead printer, life-time is much longer as well.
- You can set different printing pass to meet your printing result.
- Auto Height Sensor: Smartly Detect the Distance between Media and Printer Head
- UV Light Brightness Switch: Adjustable UV light Brightness to Fit Curing Needs
- Auto Positive Pressure Cleaning System

Specification:

Model No.	RH1610
UV Curing System	UV LED Water Cooling System
Materials to Print	metal, plastic, glass, wood, ceramics, acrylic, leather, pen, etc.
Max. Print Format	62.99"*39.37" (160*100cm)
Max. Print Gap	10cm(3.94")
Power Consumption	3800W
Power Requirement	50/60HZ 220V(±10%)<20A
Environment	20 ~ 28C HR40-60%
Print Head	Ricoh GEN5 (Nozzles 320X4), printer heads can be 3~6pcs.

RIP Software	SAi PhotoPrint DX Plus
Software Language	English/Chinese/German/Italian/Japanese/Korean/French/Finnish/Dutch/Portuguese/Spanish
Operation System	Windows 7/Windows10
Ink Type	UV ink
Ink Color	KCMYWW /KCMYLcLmWW /KCMYLcLmWWV
Ink Supply System	CISS Built Inside With Ink Bottle
Interface	USB2.0
Machine Gross Weight	1200kg
Packing Dimension	377*196*162cm
Packing	Strong Wooden Package with Full Foam

Display:

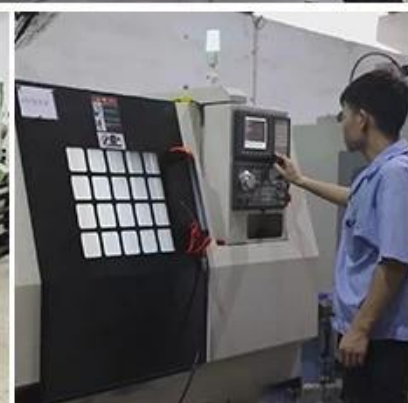






www.apex-jet.com

ADVANCED EQUIPMENTS



PROFESSIONAL R&D TEAM



OUR EXHIBITIONS



CUSTOMER VISITING



ENGINEERS ON-SITE SUPPORT

